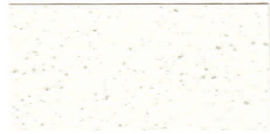




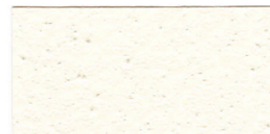
# STANDARD Color CHART 1



#420 White



#840 White



#108 Burns White



#143 White Waters



#413 Amarillo White



#206 Natural White



#482 Magnolia White



#406 Silver Fox



#102 Seamist



#340 Mockingbird



#380 Mountain Haze



#368 Driftwood



#310 Ash



#210 London White



#464 Lunar



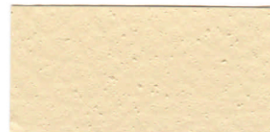
#104 Clay



#610 Dutch Cream



#400 Creme



#460 Amarillo



#107 Beach Sand



#475 Chalk



#473 Truffle



#155 Tripoli Tan



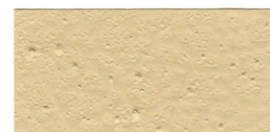
#105 Gillam



#410 Beech



#120 Salmon



#408 Sandlewood



#909 Victorian



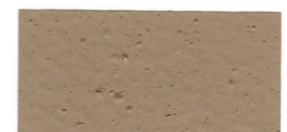
#900 Adobe



#616 Tan



#930 Pink Champagne



#227 Brown

**ALL COLORS SHOWN HERE ARE INTENDED TO SHOW APPROXIMATE COLOR OF THE FINISH. Do not use this color chart as the final selection as colors are affected by age, texture, lighting conditions, heat and application processes. Color swatches will vary in color and finish to the actual product due to jobsite conditions and methods of applications.**



4215 Independence Drive  
 Schnecksville, PA 18078  
 Tel: 610-769-0700  
 Fax: 610-769-0701

[www.ColumnCapCentral.com](http://www.ColumnCapCentral.com)

# STANDARD COLOR CHART 2



#461 Pampas White



#301 China White



#609 Linen



#101 Polar White



#22 Kool



#106 Sky



#505 Pearl Gray



#504 Oyster Gray



#360 English Fog



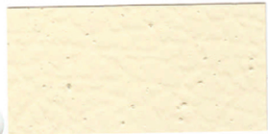
#403 Weathered



#150 Iris



#330 Dove Gray



#933 Stow



#522 Antique Ivory



#559 Mellow



#611 Flax



#208 Sandle Beige



#500 Egg



#463 Calvary



#402 Par



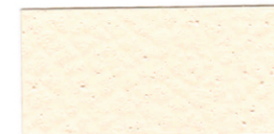
#613 Boca Raton



#660 Taupe



#606 Fuzzy Peach



#341 Silky White



#934 Pebble Sand



#180 Beige



#618 Light Beige



#372 Soft Plum



#517 Wooden Oar



#920 Pine Cone



#927 Scarlet Red



#646 Sage

**ALL COLORS SHOWN HERE ARE INTENDED TO SHOW APPROXIMATE COLOR OF THE FINISH. Do not use this color chart as the final selection as colors are affected by age, texture, lighting conditions, heat and application processes. Color swatches will vary in color and finish to the actual product due to jobsite conditions and methods of applications.**